

### Low-cost Type 5810



- Economical up to 512 ppr
- Ø58 mm housing
- Short-circuit proof outputs
- High mechanical protection
- Push-pull output (10 ... 30 V supply voltage)
- available as explosion proof zone 2 and 22

#### Mechanical characteristics:

Speed:	max. 6000 min <sup>-1</sup>
Rotor moment of inertia:	appr. 0,6 x 10 <sup>-6</sup> kgm <sup>2</sup>
Starting torque:	< 0,01 Nm
Radial load capacity of shaft:	40 N
Axial load capacity of shaft:	20 N
Weight:	appr. 0,4 kg
Protection acc. to EN 60 529:	IP 64
Working temperature:	0° C ... +65 °C
Operating temperature:	-10° C ... +75 °C
Shaft:	stainless steel
Shock resistance acc. to DIN-IEC 68-2-27:	1000 m/s <sup>2</sup> , 6 ms
Vibration resistance acc. to DIN-IEC 68-2-6:	100 m/s <sup>2</sup> , 10...2000 Hz

#### Pulse rates available at short notice:

10, 20, 25, 30, 36, 50, 60, 64, 96, 100, 125, 200, 250, 300, 360, 400, 500, 512

Other pulse rates on request

#### Electrical characteristics:

Output circuit:	Push-pull
Supply voltage:	10 ... 30 V DC
Power consumption (no load)	
without inverted signal:	max. 80 mA
Permissible load/channel:	max. ±30 mA
Pulse frequency:	max. 20 kHz
Signal level high:	min. U <sub>B</sub> - 2,5 V
Signal level low:	max. 2,0 V
Rise time t <sub>r</sub> :	max. 1 µs
Fall time t <sub>f</sub> :	max. 1 µs
Short circuit proof outputs: <sup>1)</sup>	yes
Reverse connection protection at UB:	yes
Conforms to CE requirements acc. to EN 61000-6-1, EN 61000-6-4 and EN 61000-6-3	

<sup>1)</sup>When supply voltage correctly applied

#### Terminal assignment

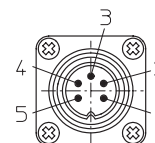
Signal:	0 V	+U <sub>B</sub>	A	B	0 or 0 <sup>-</sup>	Shield
5 pin plug, Pin:	1	2	3	4	5	PH <sup>1)</sup>
Colour	WH	BN	GN	YE	GY	

<sup>1)</sup>PH = Shield is attached to connector housing

Insulate unused outputs before initial startup.

#### Top view of mating side, male contact base:

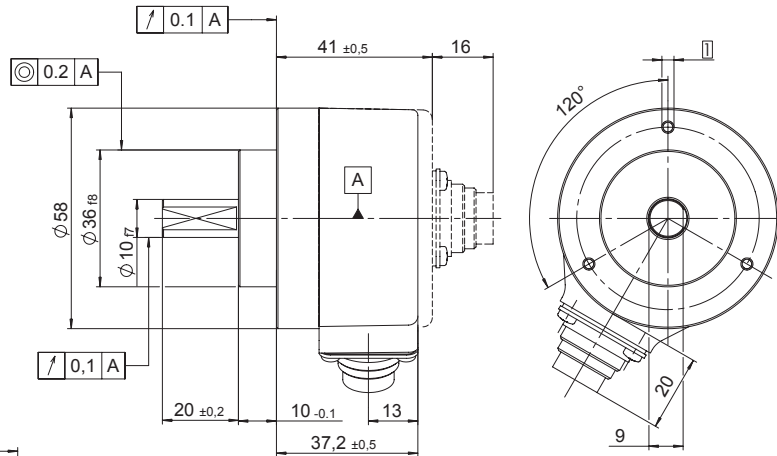
5-pin plug



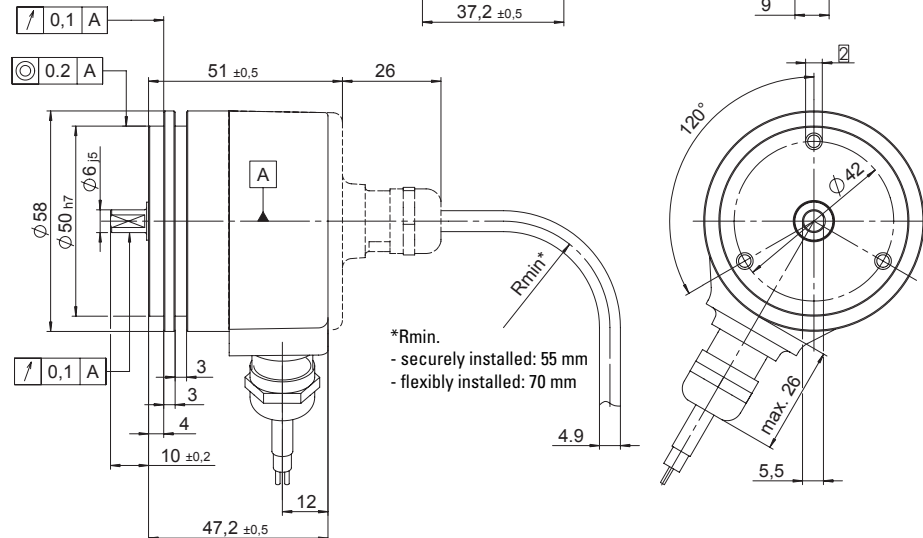
### Low-cost Type 5810

#### Dimensions

Clamping flange  $\varnothing 58$



Synchronous flange  $\varnothing 58$



\*Rmin.  
- securely installed: 55 mm  
- flexibly installed: 70 mm

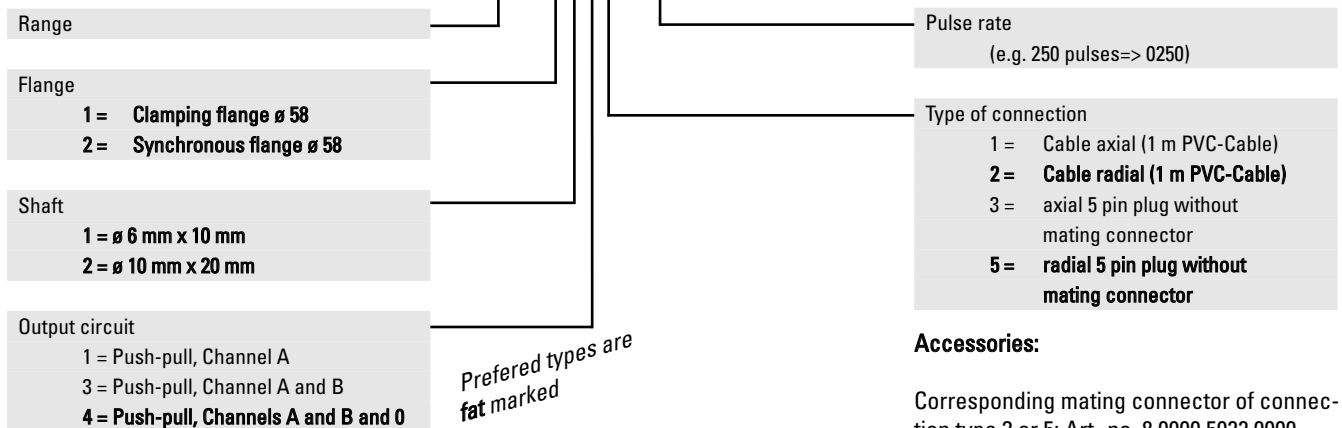
- 1 M3, 5 deep
- 2 M4, 5 deep

#### Mounting advice:

Do not connect encoder and drive rigidly to one another at shafts and flanges! Always use couplings to prevent shaft overload (see accessories chapter).

#### Order code:

8.5810.XXXX.XXXX



#### Accessories:

Corresponding mating connector of connection type 3 or 5: Art.-no. 8.0000.5022.0000  
Further accessories see accessories chapter